

8 7 6 5 4 3 2 1

D
C
B
A

D
C
B
A

Leave adequate clearance to ceiling for filter changes

Access Door
Leave adequate clearance for filter change

Hex Bolt 1/4"-20 (x4) with 1/4" Sealing Washer

Mist-Fit MF-560

Base Plate

Hex Bolt 1/4"-20 (x8) with 1/4" Sealing Washer

Wall Mount
Attach to suitable wall using appropriate fasteners

Cleared for 3/8" Bolts
Five per side (10 total)

Suction Hose 8"

Hose Clamp 8"

Hex Nut 1/4"-20 (x4)

Hex Bolt 1/4"-20 (x6)
Machine Adaptor 8"

Apply a sealant to mating surface of Machine Adaptor

Chip Strainer 8"

CNC Machine Top

Cut a 8 inch diameter hole in a suitable location if no machine knock out is provided

Sealing Washer 1/4" (x6)

Hex Nut 1/4"-20 (x6)

Drill clearance holes for 1/4" bolts use Machine Adaptor as a template and drill to suit



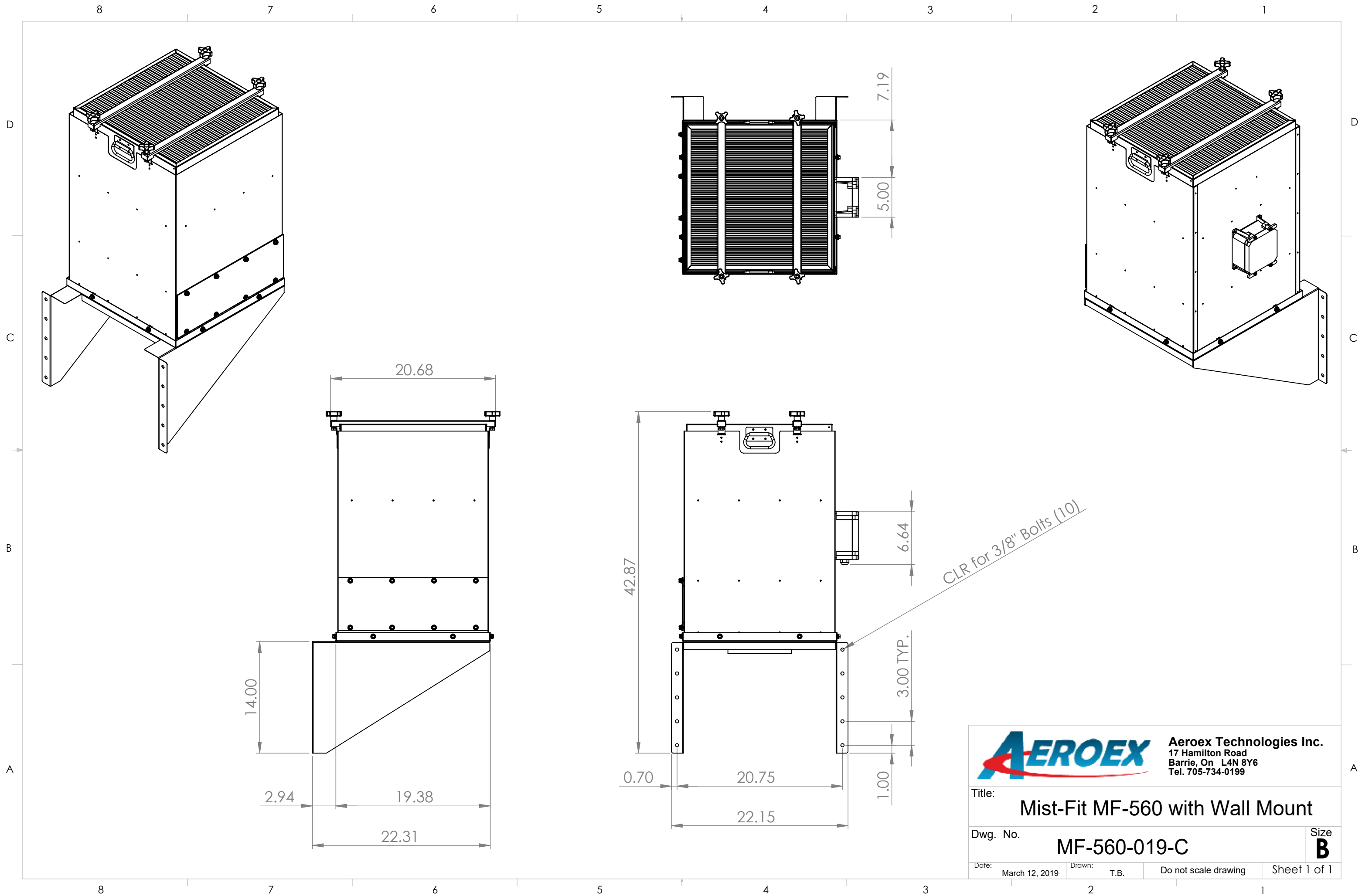
Aeroex Technologies Inc.
17 Hamilton Road
Barrie, On L4N 8Y6
Tel. 705-734-0199

Title: **Installation, MF-560, Wall Mount**

Dwg. No. **M06MBD-0019-C** Size **B**

Date: March 14, 2019 Drawn: T.B. Do not scale drawing Sheet 1 of 1

8 7 6 5 4 3 2 1



AEROEX Aeroex Technologies Inc.
 17 Hamilton Road
 Barrie, On L4N 8Y6
 Tel. 705-734-0199

Title: Mist-Fit MF-560 with Wall Mount

Dwg. No. MF-560-019-C Size **B**

Date: March 12, 2019 Drawn: T.B. Do not scale drawing Sheet 1 of 1