

8 7 6 5 4 3 2 1

D

D

C

C

B

B

A

A

Leave adequate clearance
to ceiling for filter changes

Access Door
Leave adequate clearance
for filter change

Hex Bolt 1/4"-20 (x4)
with 1/4" Sealing Washer

Cleared for 3/8" Bolts
Four per side (8 total)

Suction Hose 6"

Hose Clamp 6"

Chip Strainer 6" Std.

Sealing Washer 1/4" (x4)

Hex Nut 1/4"-20 (x4)

Mist-Fit MF-550

Base Plate

Hex Bolt 1/4"-20 (x8)
with 1/4" Sealing Washer

Wall Mount
Attach to suitable wall
using appropriate fasteners

Hex Nut 1/4"-20 (x4)

Hex Bolt 1/4"-20 (x4)
Machine Adaptor 6"

Apply a sealant to mating surface of Machine Adaptor

CNC Machine Top

Cut a 6 inch diameter hole
in a suitable location
if no machine knock out is provided

Drill clearance holes for 1/4" bolts
use Machine Adaptor as a
template and drill to suit



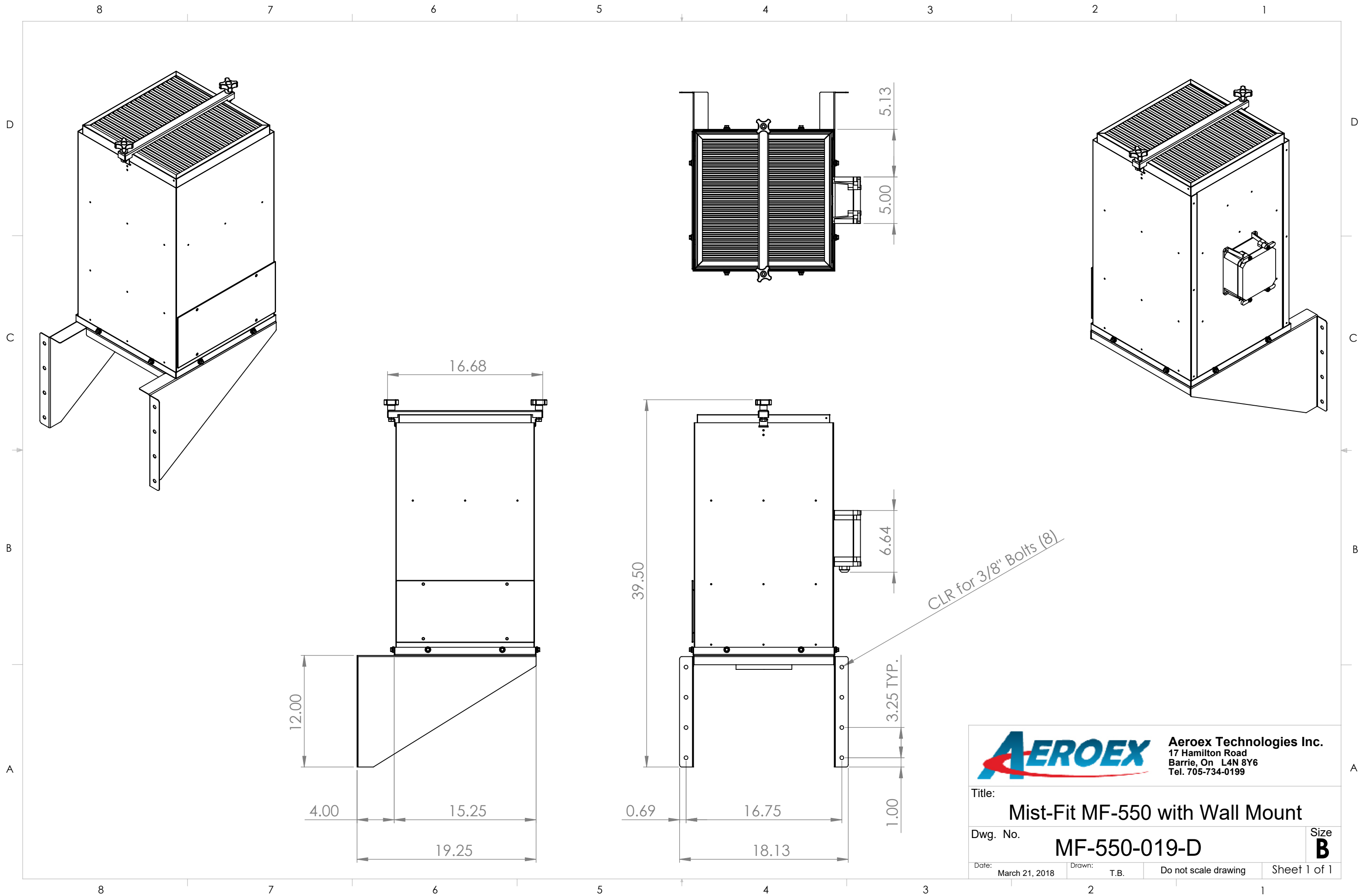
Aeroex Technologies Inc.
17 Hamilton Road
Barrie, On L4N 8Y6
Tel. 705-734-0199

Title: **Installation, MF-550, Wall Mount**


Dwg. No. **M05MBD-0019-D** Size **B**

Date: March 7, 2019 Drawn: T.B. Do not scale drawing Sheet 1 of 1

8 7 6 5 4 3 2 1



CLR for 3/8" Bolts (8)

		Aeroex Technologies Inc. 17 Hamilton Road Barrie, On L4N 8Y6 Tel. 705-734-0199	
Title: Mist-Fit MF-550 with Wall Mount			
Dwg. No. MF-550-019-D		Size B	
Date: March 21, 2018	Drawn: T.B.	Do not scale drawing	Sheet 1 of 1