

8 7 6 5 4 3 2 1

D

D

C

C

B

B

A

A

Leave adequate clearance to ceiling for filter changes

Access Door
Leave adequate clearance for filter change

Hex Bolt 1/4"-20 (x4) with 1/4" Sealing Washer

Mist-Fit MF-350

Base Plate

Hex Bolt 1/4"-20 (x8) with 1/4" Sealing Washer

Wall Mount
Attach to suitable wall using appropriate fasteners

Cleared for 3/8" Bolts
Four per side (8 total)

Suction Hose 6"

Hex Nut 1/4"-20 (x4)

Hose Clamp 6"

Hex Bolt 1/4"-20 (x4)
Machine Adaptor 6"

Apply a sealant to mating surface of Machine Adaptor

Chip Strainer 6" Std.

CNC Machine Top

Cut a 6 inch diameter hole in a suitable location if no machine knock out is provided

Sealing Washer 1/4" (x4)

Drill clearance holes for 1/4" bolts use Machine Adaptor as a template and drill to suit

Hex Nut 1/4"-20 (x4)



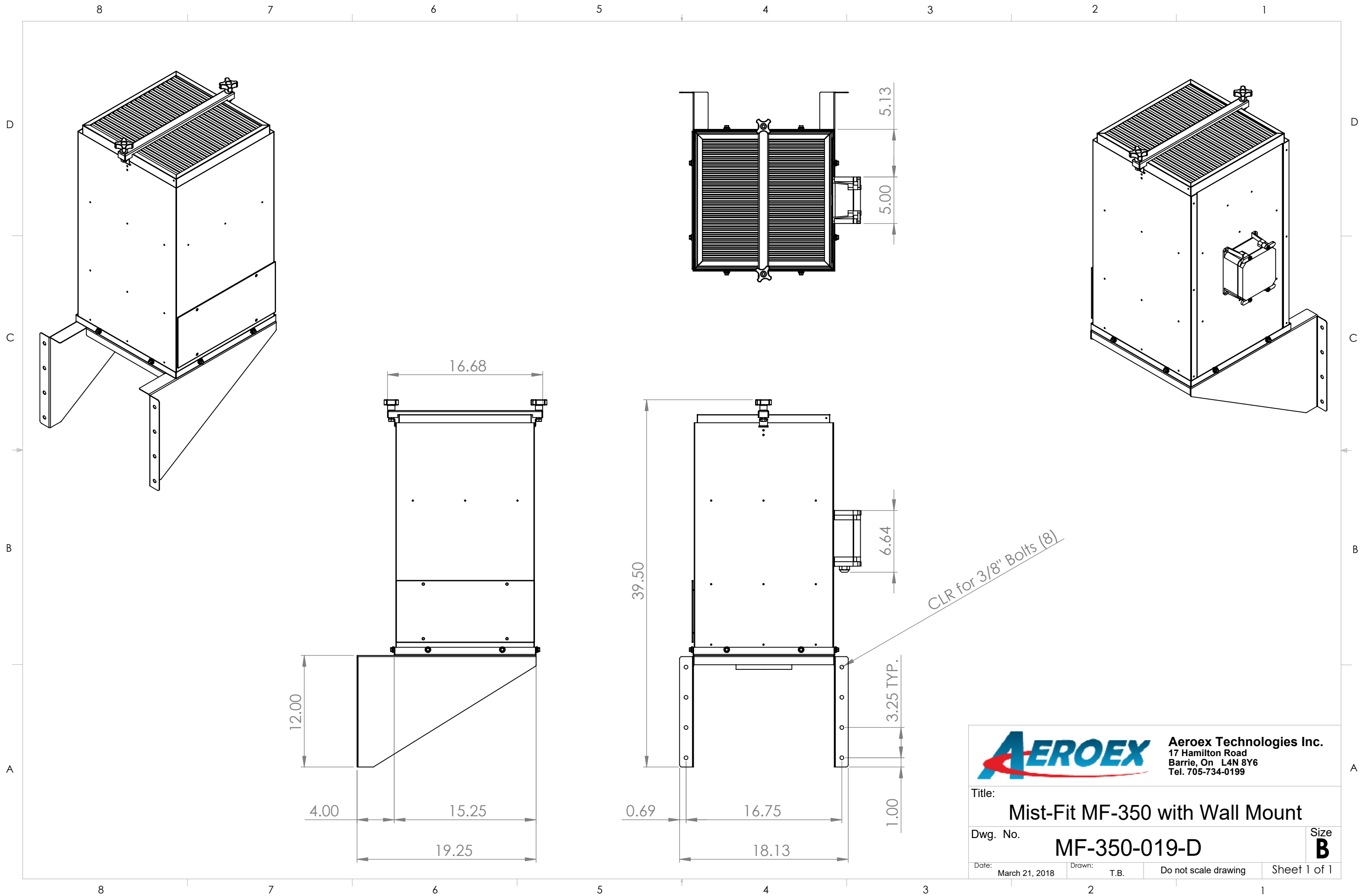
Aeroex Technologies Inc.
17 Hamilton Road
Barrie, On L4N 8Y6
Tel. 705-734-0199

Title: **Installation, MF-350, Wall Mount**

Dwg. No. **M03MBD-0019-D** Size **B**

Date: March 7, 2019 Drawn: T.B. Do not scale drawing Sheet 1 of 1

8 7 6 5 4 3 2 1



AEROEX Aeroex Technologies Inc.
 17 Hamilton Road
 Barrie, On L4N 8Y6
 Tel. 705-734-0199

Title: Mist-Fit MF-350 with Wall Mount

Dwg. No. MF-350-019-D

Date: March 21, 2018 Drawn: T.B. Do not scale drawing Sheet 1 of 1

Size **B**