

8 7 6 5 4 3 2 1

D
C
B
A

D
C
B
A

Leave adequate clearance to ceiling for filter changes

Mist-Fit MF-350

Access Door
Leave adequate clearance for filter change

Hex Bolt 1/4"-20 (x4)
with 1/4" Sealing Washer

Base Plate

Hex Bolt 1/4"-20 (x8)
with 1/4" Sealing Washer

Base Plate 15.25" x 15.25"

CNC Machine Top

Cut a 6 inch diameter hole (minimum)
in a suitable location
if no machine knock out is provided

Hex Nut 1/4"-20 (x4)

Drill clearance holes for 1/4" bolts
use Base Plate as a template
and drill to suit



Aeroex Technologies Inc.
17 Hamilton Road
Barrie, On L4N 8Y6
Tel. 705-734-0199

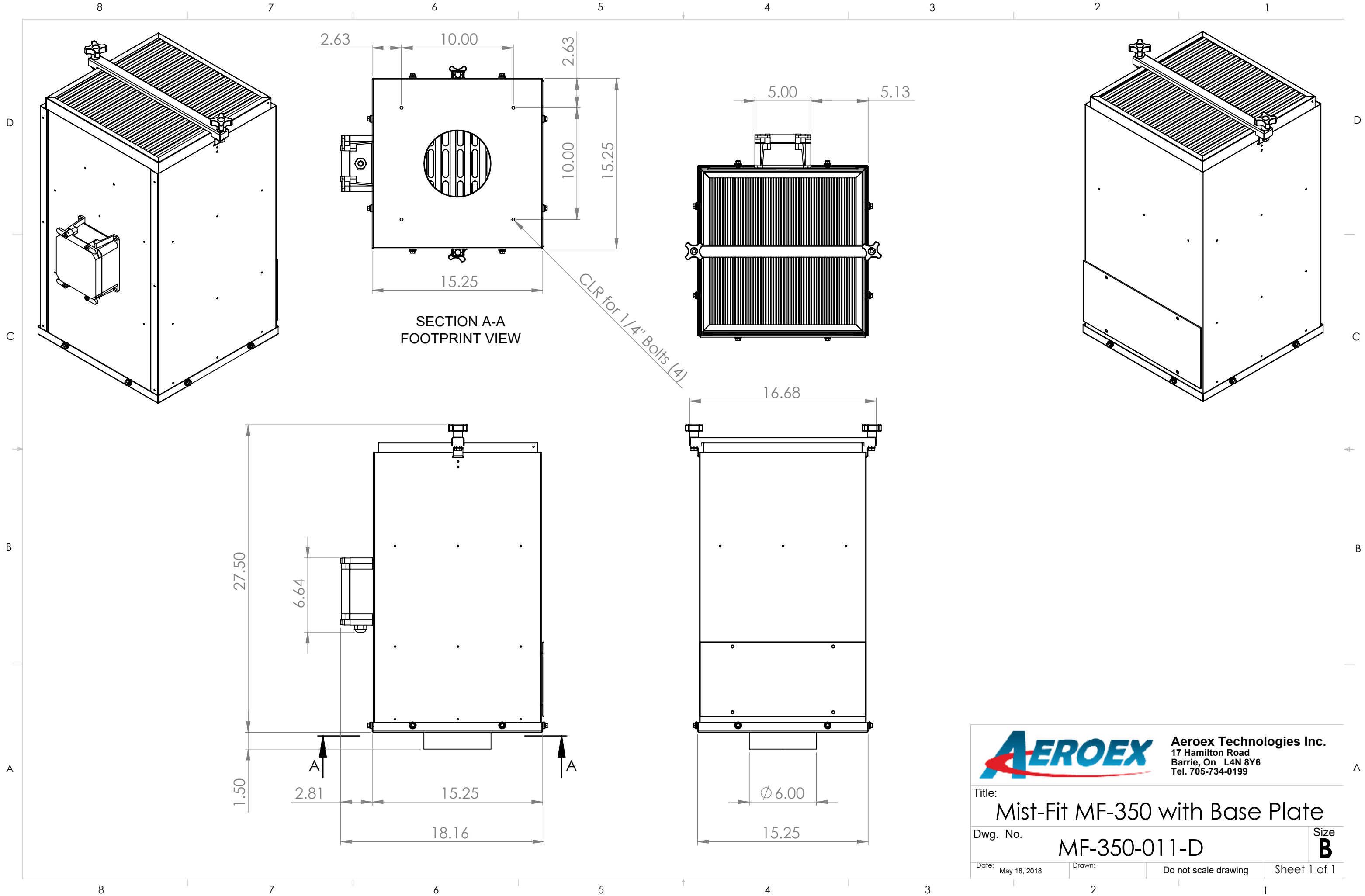
Title: **Installation, MF-350, Base Plate**

Dwg. No. **M03MBD-0011-D**

Size **B**

Date: February 19, 2019 Drawn: T.B. Do not scale drawing Sheet 1 of 1

8 7 6 5 4 3 2 1



AEROEX Aeroex Technologies Inc.
 17 Hamilton Road
 Barrie, On L4N 8Y6
 Tel. 705-734-0199

Title: Mist-Fit MF-350 with Base Plate

Dwg. No. MF-350-011-D

Date: May 18, 2018 Drawn: Do not scale drawing Sheet 1 of 1

Size **B**