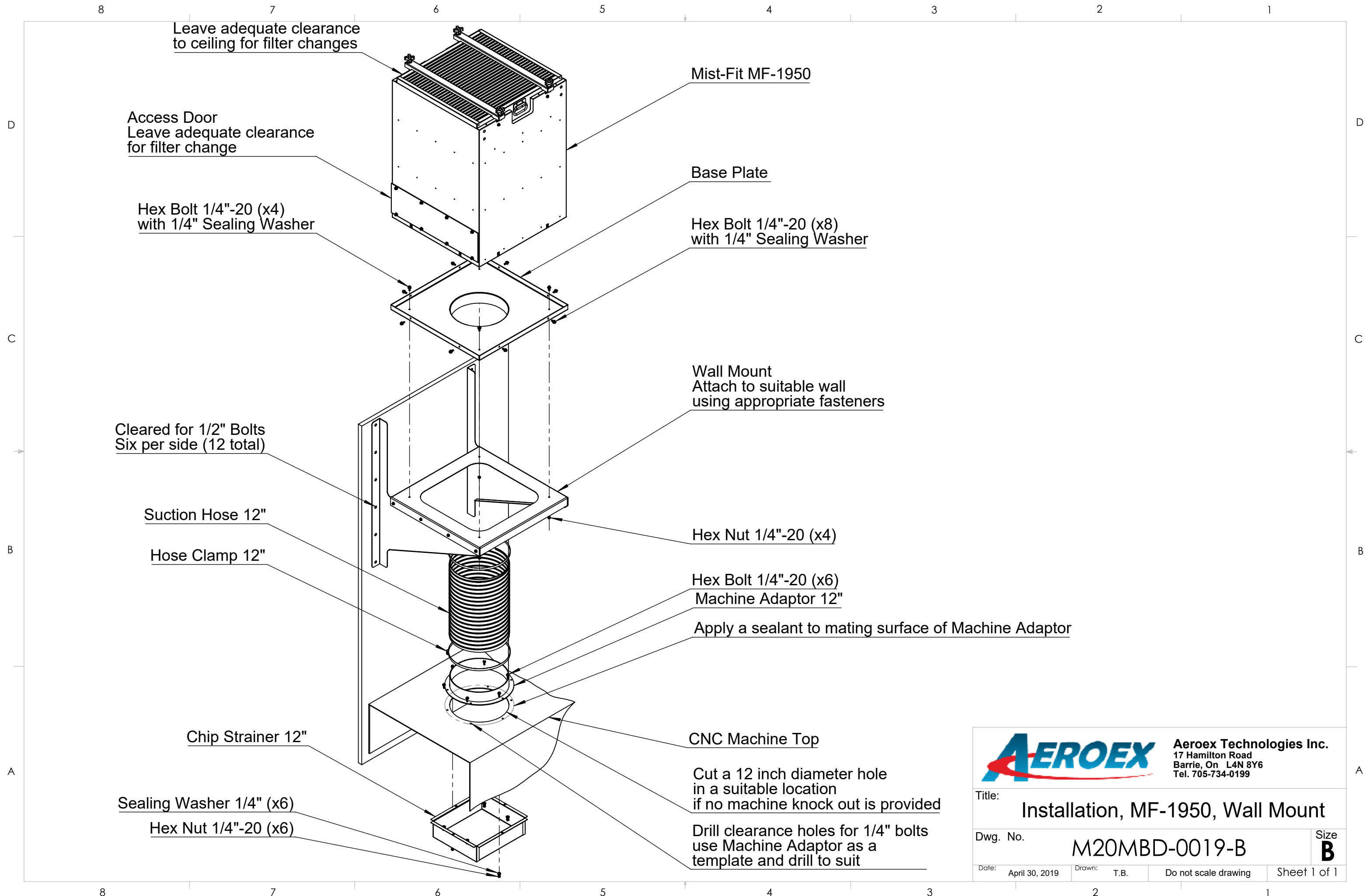


AEROEX Aeroex Technologies Inc.
 17 Hamilton Road
 Barrie, On L4N 8Y6
 Tel. 705-734-0199

Title: Mist-Fit MF-1950 with Wall Mount

Dwg. No. MF-1950-019-B Size **B**

Date: April 1, 2019	Drawn: T.B.	Do not scale drawing	Sheet 1 of 1
---------------------	-------------	----------------------	--------------



Leave adequate clearance to ceiling for filter changes

Access Door
Leave adequate clearance for filter change

Hex Bolt 1/4"-20 (x4) with 1/4" Sealing Washer

Mist-Fit MF-1950

Base Plate

Hex Bolt 1/4"-20 (x8) with 1/4" Sealing Washer

Wall Mount
Attach to suitable wall using appropriate fasteners

Cleared for 1/2" Bolts
Six per side (12 total)

Suction Hose 12"

Hose Clamp 12"

Hex Nut 1/4"-20 (x4)

Hex Bolt 1/4"-20 (x6)
Machine Adaptor 12"

Apply a sealant to mating surface of Machine Adaptor

Chip Strainer 12"


CNC Machine Top

Cut a 12 inch diameter hole in a suitable location if no machine knock out is provided

Drill clearance holes for 1/4" bolts use Machine Adaptor as a template and drill to suit

Sealing Washer 1/4" (x6)

Hex Nut 1/4"-20 (x6)

		Aeroex Technologies Inc. 17 Hamilton Road Barrie, On L4N 8Y6 Tel. 705-734-0199	
Title: Installation, MF-1950, Wall Mount			
Dwg. No.		M20MBD-0019-B	
Date: April 30, 2019		Drawn: T.B.	
Do not scale drawing		Sheet 1 of 1	

Size
B