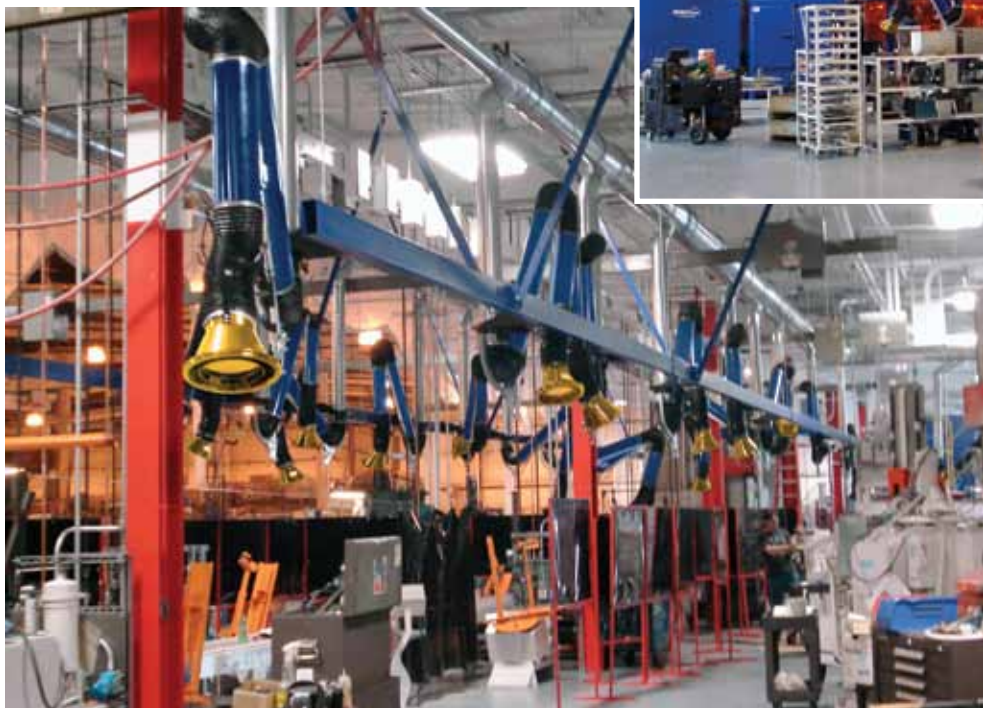


## RoboVent FumeArms & Booms

### **Articulated FumeArms for capturing smoke and fumes right at the source.**

RoboVent FumeArms are a versatile and simple solution for capturing smoke and fumes from welding and other industrial processes. The FumeArms are available in 6" and 8" diameters, and are designed to move smoothly and easily into position to extract smoke and contaminated air from the worker's breathing zone. The RoboVent FumeArms are durable, robust, and virtually maintenance free, with all joints on the outside of the arm, not in the dirty air stream. All metal surfaces are powder coated to protect from scratches. The RoboVent FumeArms are self-supporting, with smooth, low-friction control, and require the least maintenance of any fume extraction arm on the market today.

RoboVent FumeArms work in conjunction with overhead hoods in a large weld smoke extraction system.



### **Long Reach Extension Booms.**

RoboVent Extension Booms are designed to extend the reach of the RoboVent FumeArms providing up to a 25 foot radius of combined coverage. The Extension Booms are of heavy duty, welded construction with a durable powder coat finish. All Booms include a robust bracket for securing the Boom to a wall or post, a heavy-duty flange to attach the FumeArm, and are available in 6", 8" or 10" diameter. The Booms come in both single and double articulated versions with a reach of up to 12 feet.



A world class heavy equipment manufacturer uses 8" diameter 10' long FumeArms to provide smoke capture for a new Manual Welding line.

## RoboVent FumeArms & Booms : Configurations

### RoboVent Base Mount FumeArms

- Model FR-610, 6" Diameter, 10' Length
- Model FR-614, 6" Diameter, 14' Length
- Model FR-810, 8" Diameter, 10' Length
- Model FR-814, 8" Diameter, 14' Length
- Model PPR-810, 8" Diameter, 10' Length

Note: Other diameters and lengths are available.



### RoboVent Hanging FumeArms

- Model FH-610, 6" Diameter, 10' Length
- Model FH-614, 6" Diameter, 14' Length
- Model FH-810, 8" Diameter, 10' Length
- Model FH-814, 8" Diameter, 14' Length
- Model PPH-810, 8" Diameter, 10' Length
- Model FHWB-6, 6" Wall Bracket
- Model FHWB-8, 8" Wall Bracket

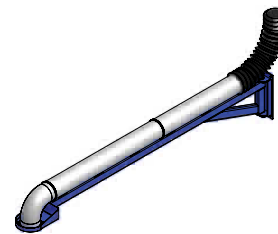
Note: Other diameters and lengths are available.



### RoboVent Single Articulated Extension Booms

- Model BA-0608, 6" Diameter, 8' Length
- Model BA-0610, 6" Diameter, 10' Length
- Model BA-0612, 6" Diameter, 12' Length
- Model BA-0808, 8" Diameter, 8' Length
- Model BA-0810, 8" Diameter, 10' Length
- Model BA-0812, 8" Diameter, 12' Length
- Model BA-1010, 10" Diameter, 10' Length
- Model BA-1012, 10" Diameter, 12' Length

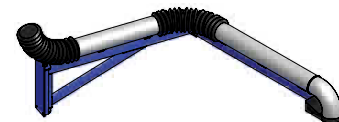
Note: Other diameters and lengths are available.



### RoboVent Double Articulated Extension Booms

- Model BDA-0612, 6" Diameter, 12' Length
- Model BDA-0812, 8" Diameter, 12' Length
- Model BDA-1012, 10" Diameter, 12' Length

Note: Other diameters and lengths are available.



Due to continued engineering, all specifications are subject to change without notice.  
©2010 RoboVent Product Group, Inc.

Aeroex Technologies Inc.  
Ph: 905-655-7295  
[sales@aeroex.ca](mailto:sales@aeroex.ca)  
[www.aeroex.ca](http://www.aeroex.ca)